

KYDEX® HD 3D Laminate

For flat lamination and membrane pressed applications

Introduction

KYDEX® HD is a thermoplastic 3D laminate giving designers the ability to incorporate compound corners, logos, and wire management holes while eliminating unsightly seams and the need for edgbanding typically associated with HPL / TFM surfaces. Its integral color and high impact resistance minimizes costly maintenance associated with other laminates.

General Information

High durability (HD), high impact, membrane pressable thermoplastic 3D laminate with integral color in 0.56mm (0.022") thickness. While providing great definition it surpasses vinyl overlays, high pressure laminates and melamine in resistance to surface and edge impact.

Suggested Applications

- * store fixtures
- * kiosks
- * checkout counters
- * cabinetry
- * exhibits and displays
- * door and drawer fascias
- * moldings
- * pedestals and stands
- * transaction surfaces
- * workstations
- * tabletops
- * logo and trademark panels
- * flat laminated panels

Features

- * tough and durable
- * resistant to cracking and chipping
- * solid, integral color
- * 3000+ custom colors
- * resistant to a wide range of chemicals
- * abrasion resistant
- * fire retardant
- * excellent fabrication qualities
- * very low moisture absorption
- * membrane pressable
- * flexibility allows small radius bends

Environmental and Safety Considerations

Kleerdex is committed to ensuring that its products can be manufactured, transported, stored, used, disposed and recycled with an appropriate regard for safety, health and environmental protection. We support the safe handling of our products. Please contact our Technical Service department at 800.682.8758 for resources or visit our website: www.kydex.com. For Material Safety Data Sheets, please call 800.325.3133.

Production Capability

- * standard width: 1,447.80mm (57")
- * custom width: 304.80mm - 1,524mm (12" - 60")
- * standard length:
 - sheets: 3,048mm (120")
 - roll length up to 106.68m (350')
- * thickness: 0.56mm ± 0.05mm (0.022" ± 0.002")
- * color tolerances:
 - CIE L-a-b color specification
- $\Delta L = \pm 0.75$ $\Delta a = \pm 0.75$ $\Delta b = \pm 0.75$ $\Delta E = \pm 1.0$
- * primary surface Texture: P-K (Cashmere)
- * gloss: 5 - 9 @ 60°
- * roll or sheet stock

Kleerdex Company, LLC

ISO 9001 and ISO 14001 Certified

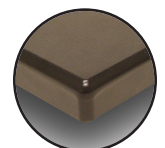
Customer Service

6685 Low St, Bloomsburg, PA 17815 USA
Phone: 800.325.3133, +1.570.389.5810
Outside the US: +1.570.389.5814
Fax: 800.452.0155, +1.570.387.7786
Email: info@kleerdex.com

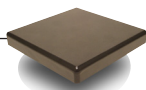
Technical Service

Phone: 800.682.8758 ext. 581
Fax: +1.570.387.8722
Outside the US: +1.570.387.6997 ext.581

www.kydex.com



Durability by Design®



KYDEX® HD 3D Laminate

For flat lamination and membrane pressed applications

Physical Properties

Property	Test Method	Typical Value ¹	
Specific Gravity	ASTM D-792	1.42	
Tensile Strength	ASTM D-638	7,200 psi	49.5 MPa
Tensile Modulus	ASTM D-638	401,000 psi	2761 MPa
Elongation %	ASTM D-638	167	
Flexural Strength	ASTM D-790	12,570 psi	86.5 MPa
Modulus of Elasticity	ASTM D-790	489,000 psi	3367 MPa
Rockwell Hardness (R Scale)	ASTM D-785	114	
Heat Deflection Temperature (HDT) @264psi (1.8 MPa) unannealed/annealed	ASTM D-648	153°F 167°F	67.1°C 75.1°C
Abrasion Resistance ³	ASTM D-1044	0.0094	
Ball Impact Resistance ²	NEMA LD3 - 2005	> 3000	
Dart Impact Resistance ²	NEMA LD3 - 2005	> 1000	
Cleanability	NEMA LD3 - 2005	14	
Surface Burning Characteristics: ² Flame Spread / Smoke	ASTM E-84	Class 1/A	
¹ Values based upon 3.20mm (0.125") sheet unless otherwise specified. ² Values based upon 0.56mm (0.022") sheet. ³ Type CS10F wheel, 500gm load, weight loss (gms) per 1000 cycles. Not intended for specification purposes.			

Kleerdex Company, LLC

ISO 9001 and ISO 14001 Certified

Customer Service

6685 Low St, Bloomsburg, PA 17815 USA
 Phone: 800.325.3133, +1.570.389.5810
 Outside the US: +1.570.389.5814
 Fax: 800.452.0155, +1.570.387.7786
 Email: info@kleerdex.com

Technical Service

Phone: 800.682.8758 ext. 581
 Fax: +1.570.387.8722
 Outside the US: +1.570.387.6997 ext.581

Because we cannot anticipate or control the many different conditions under which this information and our products may be used, we do not guarantee the applicability of the accuracy of this information or the suitability of our products in any given situation. Users should conduct their own tests to determine the suitability of each product for their particular purposes. Data in the physical property table represents typical values and are to serve only as a guide for engineering design. Results are obtained from specimens under ideal laboratory conditions. Right to change physical properties as a result of technical progress is reserved. THE PRODUCTS DISCUSSED ARE SOLD WITHOUT WARRANTY OF MERCHANTABILITY OR FITNESS FOR A PARTICULAR USE, EITHER EXPRESSED OR IMPLIED, EXCEPT AS PROVIDED IN OUR STANDARD TERMS AND CONDITIONS OF SALE. Buyer assumes all responsibility for loss or damage arising from the handling and use of our products, whether done in accordance with directions or not. In no event shall the supplier or the manufacturer be liable for incidental or consequential damages. Also, statements concerning the possible use of our products are not intended as recommendations to use our products in the infringement of any patent. Consult local code and regulatory agencies for specific requirements regarding code compliance, transporting, processing, recycling and disposal of our products. Product not intended for use as a heat resistant surface. Texture, product grade and other conditions may cause variations in appearance.

This information supersedes all previously published data.